



.....

GPSMAP[®] 66i

**GPS NAVIGATION HANDHELD AND
INREACH SATELLITE COMMUNICATION TECHNOLOGY**

NEW PRODUCT ANNOUNCEMENT

**OVERVIEW | FEATURES | COMPARISON |
CONFIGURATIONS | SPECIFICATIONS | COMPATIBILITY**

MARKETING MEMO

June 5, 2019



PRODUCT OVERVIEW:

Precise navigation meets global communication in the rugged GPSMAP® 66i. Using inReach® technology, the button-operated GPS handheld and satellite communicator¹ lets you trigger an interactive SOS to GEOS and enables two-way messaging and location tracking via the 100% global Iridium® satellite network. Navigate confidently with preloaded TopoActive Europe mapping, direct-to-device BirdsEye Satellite Imagery downloads, multiple Global Navigation Satellite Systems (GNSS) support and navigation sensors.



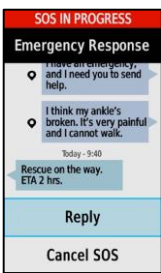
KEY FEATURES:

NEW	INTERACTIVE SOS	Trigger an interactive SOS to the GEOS 24/7 search and rescue monitoring centre (satellite subscription required)
NEW	TWO-WAY MESSAGING	Two-way messaging via the 100% global Iridium® satellite network (satellite subscription required)
NEW	LIVETRACK FEATURES	Get live location sharing via the 100% global Iridium satellite network so you can stay in contact with loved ones, teammates, headquarters and more (subscription required)
	WEATHER	Mobile connectivity provides access to Active Weather for up to date forecasts including predictive maps for temperature, wind, precipitation and clouds.
	SEE WHERE YOU'RE HEADING	Preloaded with TopoActive Europe mapping and access to BirdsEye Satellite Imagery with direct downloads and no annual subscription required
	MULTI-GNSS SUPPORT	Multi-satellite network support to track your travels in more challenging environments than GPS alone
	ABC SENSORS WITH AUTOCALIBRATION	3-axis tilt-compensated electronic compass with accelerometer and barometric altimeter sensors with autocalibration to get always the most precise data available
	LARGE COLOUR DISPLAY	Large 3" sunlight-readable colour display for best readability in any weather conditions
	GARMIN EXPLORE	Compatible with the Garmin Explore™ website and app to help you manage waypoints, routes, activities and collections, use tracks and review trip data from the field
	WIKILOK	Preloaded with the Wikiloc Connect IQ app with risk-free trial offering more than 9 million trails for download
	BUILT FOR ADVENTURE	Provides an LED flashlight and SOS beacon that can be used to signal for help; built to military standards for thermal, shock and water performance (MIL-STD-810G), and it's even compatible with night vision goggles
	BATTERY PERFORMANCE	Internal, rechargeable lithium battery provides up to 35 hours of battery life in 10-minute tracking mode (default) and 200 hours in 30-minute tracking Expedition mode
	EXPANDABLE MEMORY	16 GB of built-in memory can be expanded with a microSD™ card (sold separately) for optional mapping and data storage
	WATER RATING	Rugged, impact resistant and water-rated to IPX7 ²

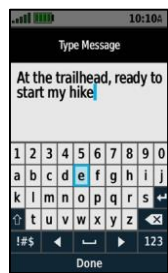
TOPO MAP PAGE AND INCOMING MESSAGE



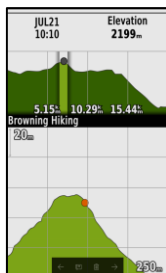
SOS DIALOGUE



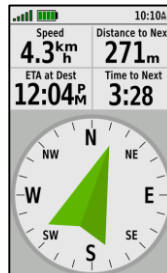
TEXT MESSAGING



BAROMETRIC ALTIMETER



ELECTRONIC COMPASS






BIRDSEYE SATELLITE IMAGERY



ACTIVE WEATHER



PRODUCT COMPARISON:

	GPSMAP 66s	GPSMAP 66st	GPSMAP 66i
			
Global interactive SOS¹			•
Two-way global messaging¹			•
Multi-GNSS support	•	•	•
Wireless connectivity Wi-Fi®, Bluetooth® and ANT+® wireless technologies	•	•	•
Built-in navigation sensors Digital compass, barometric altimeter and accelerometer	•	•	•
Smart notifications	•	•	•
LED flashlight and beacon	•	•	•
Garmin Explore™ mobile app compatible	•	•	•
Active Weather	•	•	•
BirdsEye Satellite Imagery direct-to-device	•	•	•
Preloaded with TOPO maps for TopoActive Europe		•	•
Battery life	Up to 16 hours (Standard mode) Up to 1 week (Expedition mode)	Up to 16 hours (Standard mode) Up to 1 week (Expedition mode)	Up to 35 hours (Standard mode) Up to 200 hours (Expedition mode)
Water rating	IPX7 ²	IPX7 ²	IPX7 ²
Physical dimensions	2.5" x 6.4" x 1.4" (6.2 x 16.3 x 3.5 cm)	2.5" x 6.4" x 1.4" (6.2 x 16.3 x 3.5 cm)	2.6" x 6.4" x 1.4" (6.6 x 16.3 x 3.5 cm)
Weight	8.1 oz (230 g) with batteries	8.1 oz (230 g) with batteries	8.5 oz (241g) with batteries
Display size	1.5"W x 2.5"H (3.8 x 6.3 cm) 3" diag (7.6 cm)	1.5"W x 2.5"H (3.8 x 6.3 cm) 3" diag (7.6 cm)	1.5"W x 2.5"H (3.8 x 6.3 cm) 3" diag (7.6 cm)

PRODUCT CONFIGURATIONS:



DESCRIPTION	SKU	UPC
GPSMAP 66i Includes: GPSMAP 66i, USB cable, carabiner clip, documentation	010-02088-02	753759218744

RRP:						
EUR	GBP	NOK	SEK	DKK	FIN EUR	
€599.99	£549.99	6 399	6 699	4 999	649,00	

SATELLITE AIRTIME PLANS:

ANNUAL COMMITMENT PLAN

- Ideal for consistent users; SOS capability provides ongoing peace of mind
- 12-month contract
- Lower monthly fees; plans range from €14.99 to €89.99 per month
- Unlimited SOS and Preset Messages at all levels
- Move up a plan at any time for free
- Initial account activation fee of €24.99; move down a plan at any time for €29.99

FREEDOM PLAN

- Pay for airtime 1 month at a time
- Change plans, up or down, or suspend the device for free
- Keep all your account data, tracks and details when suspended
- Plans range from €19.99 to €114.99 per month
- Unlimited SOS and Preset Messages at all levels
- Annual freedom program fee of €29.99

GPSMAP 66i handheld requires an active airtime subscription to use the Iridium® satellite communication features and must be activated at [explore.Garmin.com](https://explore.garmin.com)

PHYSICAL SPECIFICATIONS:

Unit dimensions (W x H x D)	2.6" x 6.4" x 1.4" (6.6 x 16.3 x 3.5 cm)	Internal memory	16 GB
Display size	1.5"W x 2.5"H (3.8 x 6.3 cm); 3" diag (7.6 cm)	Accepts data cards	Yes - microSD™ card (sold separately)
Display resolution (W x H)	240 x 400 pixels	Wireless	Wi-Fi®, Bluetooth® and ANT+®
Display type	Transflective colour TFT	Water rating	IPX71
Weight	8.5 oz (241g)	Interface	microUSB, NMEA 0183
Battery type	Rechargeable internal lithium ion	Waypoints and routes	10,000 waypoints 250 routes
Battery life	Up to 35 hours in 10-minute tracking mode (default) Up to 200 hours in 30-minute tracking (Expedition mode)	Track log	20,000 points 250 saved gpx tracks 300 saved fit activities

PACKAGING SPECIFICATIONS:



Gift box dimensions (W x H x D)	5.4" x 6.9" x 2.1" (13.7 x 17.6 x 5.3 cm)
Gift box weight	15.5 oz. (439 g)
Master carton dimensions (W x H x D)	15.0" x 12.4" x 12.0" (38.1 x 31.5 x 30.5 cm)
Master carton weight	23.3 lbs. (10.6 kg)
Master carton quantity	20

COMPATIBLE PRODUCT OVERVIEW:

FENIX® 5 PLUS SERIES GPS WATCHES



INSTINCT GPS WATCHES



See Garmin.com for details and available devices.

GARMIN EXPLORE™:

COMPATIBLE WITH THE GARMIN EXPLORE WEBSITE AND APP



The free Garmin Explore mobile app lets you plan, review and sync data, including waypoints, routes, activities and collections. Review completed activities while still in the field, even when you're off the grid. The app also lets you sync your GPSMAP 66i with your compatible mobile device so you can access unlimited maps, aerial imagery and topographic maps. You can even use all of the inReach features on your paired mobile device. For easier messaging, you can access your phone's contact list from the Garmin Explore app to connect with fewer keystrokes. Plan for future trips and review previous activities from the Garmin Explore website.



COMPATIBLE ACCESSORIES:

NEW



NEW



POWERED MOUNT
Designed for 1-handed, quick-release operation, this powered mount allows for easy grab-and-go accessibility with your compatible handheld device. It uses the AMPS mounting pattern and includes an integrated cable with USB connection.

POWERED MOUNT WITH SUCTION CUP
Use the powered mount with suction cup to secure your compatible handheld device to a windshield or any smooth, flat surface.

FLOATATION LANYARD
Keep your device secure and close-at-hand on the water with this neoprene floatation lanyard, featuring a quick-release connector.

BELT CLIP
Keep your compatible device within reach while on the move with this belt clip. Simply snap your device securely into the durable plastic mount and clamp it to your belt.

SKU: 010-12825-00
UPC: 753759218775
RRP: €29.99

SKU: 010-12825-01
UPC: 753759238223
RRP: €69.99

SKU: 010-12525-01
UPC: 753759177133
RRP: €7.99

SKU: 010-11734-20
UPC: 753759980375
RRP: €8.99

	SKU	UPC	RRP	DESCRIPTION	
MICRO USB CABLE	010-11478-01	753759101985	€11.99	Get the most out of your device using this micro USB cable.	
HIGH-SPEED MULTI-CHARGER	010-10723-17	753759111540	€19.99	Add 2 high-speed USB ports to your vehicle's 12-V outlet without losing the ability to power your compatible device.	
BIKE/CART MOUNT	010-11023-00	753759074654	€11.99	Simply snap in your device. The mount comes with 4 cable ties and fits up to a 1" (2.54 cm) diameter bar.	
FRICTION MOUNT	010-11602-00	753759975463	€38.99	Use this portable friction mount to mount your device on your dashboard for easier navigation as you drive your vehicle.	
ADJUSTABLE HANDHELD MOUNT	010-11031-00	753759075880	€29.99	Secure your compatible handheld device to any flat surface with this adjustable mount.	
RETRACTABLE LANYARD	010-10888-00	753759066604	€24.99	Keep your GPS close and secure with this retractable lanyard.	
SWIVEL BELT CLIP	010-11022-10	753759093662	€7.99	Keep your device within reach with this swivel belt clip. Your device fits securely into a mount that clips to your belt.	
BACKPACK TETHER	010-11855-00	753759990138	€19.99	This lightweight backpack tether is perfect for conditions that demand hands-free attention.	

¹ Satellite subscription required.

² Withstands incidental exposure to water of up to 1 meter for up to 30 minutes; see Garmin.com/waterrating for more details

NOTICE: Some jurisdictions regulate or prohibit the use of satellite communications devices. It is the responsibility of the user to know and follow all applicable laws in the jurisdictions where the device is intended to be used.

The Bluetooth word mark and logos are registered trademarks owned by Bluetooth SIG, Inc. and any use of such marks by Garmin is under license. Wi-Fi is a registered trademark of the Wi-Fi Alliance.